

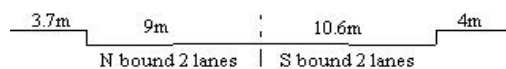
YEAR 2020

CORE STATION 1109

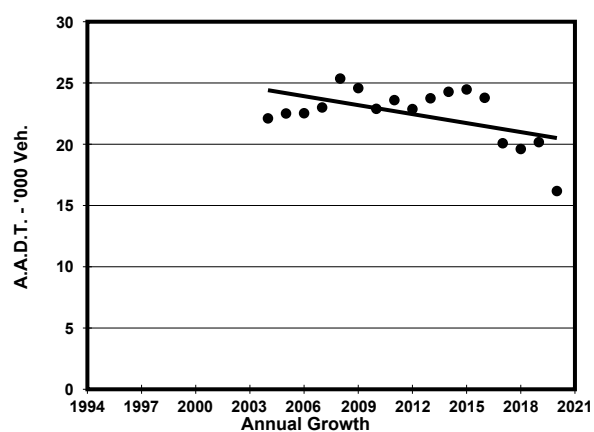
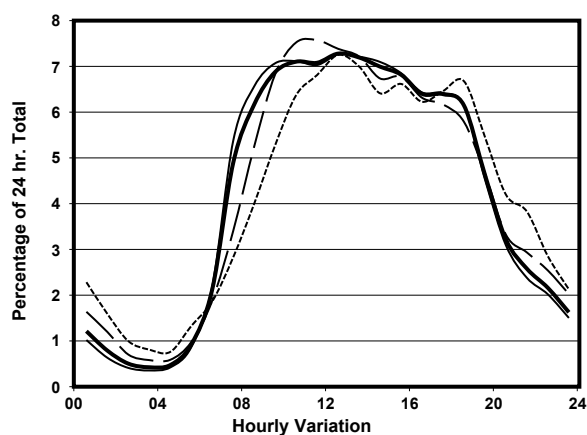
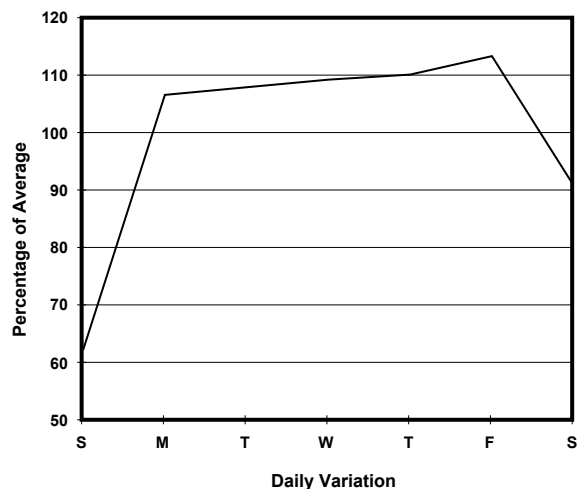
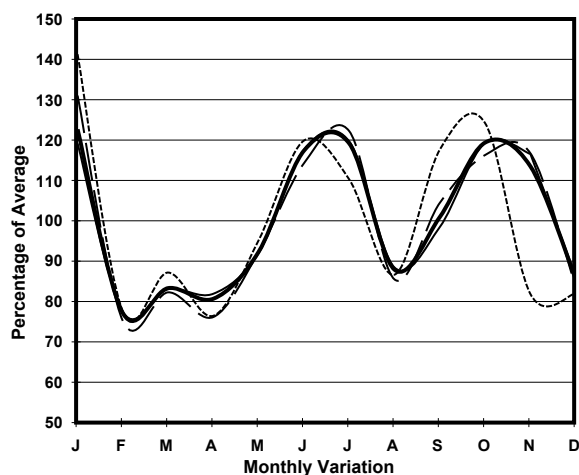
ROAD NETWORK MINOR

ROAD TYPE LOCAL DISTRIBUTOR

LINK OCEAN PARK RD (from WONG CHUK HANG RD to OCEAN PARK)



1. TRAFFIC FLOW VARIATION AND GROWTH



— All day - - - - - Mon.- Fri. Sat. - . - . - Sun.

2. TRAFFIC CHARACTERISTICS (BY DIRECTION)

Parameter	All - Day	Mon. - Fri.	Sat.	Sun.
SOUTH BOUND				
A.A.D.T.	9760	10720	9400	6680
R 12 / 24 - %	79.3	80.7	76.6	72.2
R 16 / 24 - %	91.6	92.2	90.2	88.4
AM Peak Hour	0900-1000	0900-1000	0900-1000	0900-1000
One-way flow at AM peak hour	710	810	660	360
T - % (AM)	-	-	-	-
PM Peak Hour	1600-1700	1600-1700	1600-1700	1800-1900
One-way flow at PM peak hour	590	650	580	430
T - % (PM)	-	-	-	-
Prop.of commercial vehicles - 16 hr.	-	-	-	-
NORTH BOUND				
A.A.D.T.	6420	7310	5570	3660
R 12 / 24 - %	79.4	80.4	77.5	71.4
R 16 / 24 - %	92.5	93.1	90.9	88
AM Peak Hour	0900-1000	0900-1000	0900-1000	0900-1000
One-way flow at AM peak hour	410	470	370	190
T - % (AM)	-	-	-	-
PM Peak Hour	1700-1800	1700-1800	1700-1800	1700-1800
One-way flow at PM peak hour	500	580	380	270
T - % (PM)	-	-	-	-
Prop.of commercial vehicles - 16 hr.	-	-	-	-

3. OTHER INFORMATION AND COMMENT